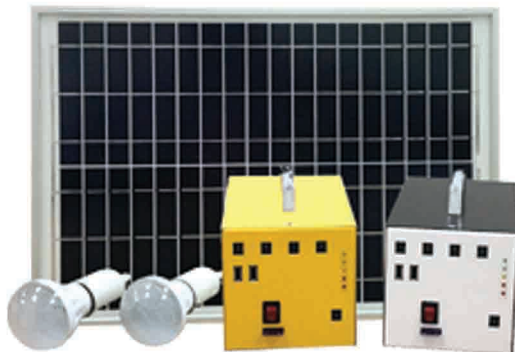
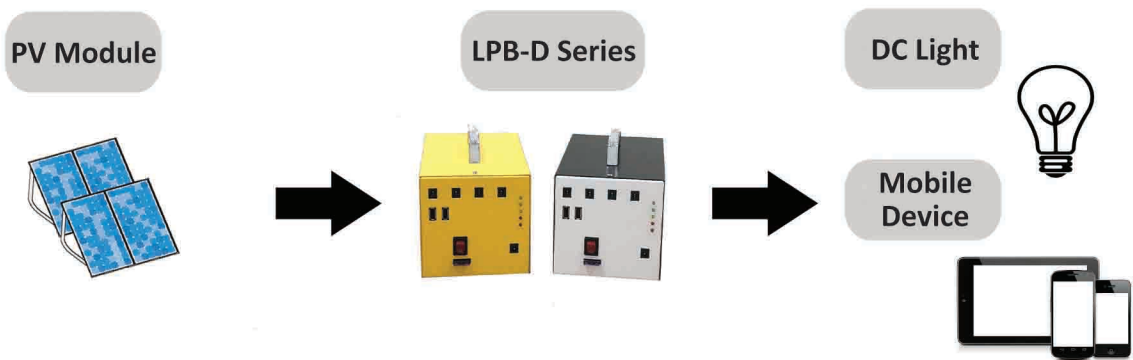


LPB-D Series



- With solar panel
- With LED bulbs
- USB cable with multi-connectors
- With 5VDC USB charger ports
- With 12VDC output ports
- Easy to change battery design
- Easy to carry
- Battery can be charged via AC (option)

Demonstration



* Application to DC loads such as light, fan, mobile, GPS

Specification

Model		LPB-10D	LPB-20D
AC Input	Voltage	230VAC	
	Frequency	50Hz / 60Hz (Auto Sensing)	
Solar Input	Max. PV Array Voc	20VDC	
	Max. PV Array Isc	2A	
DC Output	DC Connector	12VDC * 4 Sets (Total: Max 24W)	
	USB Charger	5VDC * 2 Sets (Total: Max 10W)	
Battery	Type & Numbers	12VDC / 7Ah * 1pcs	12VDC / 12Ah * 1pcs
	Battery Voltage	12VDC	
	Shutdown Voltage	10VDC	
Charger	Charging Current	Max: 2A	
Accessories	Solar Panel	10W * 1pcs	20W * 1pcs
	LED Bulb	3W * 2pcs	3W * 4pcs
	USB Cable	1 Set	
Protection	Overload	Yes	
	Over Temperature	Yes	
Physical	Dimension (D * W * H) mm	210 * 125 * 160	
	Net Weight (kgs)	4.1	5.3
Environment	Humidity	0% to 90% @ 0° C - 40° C (Non-condensing)	
	Noise	Less than 40dB	

* Product specification is subject to change without prior notice